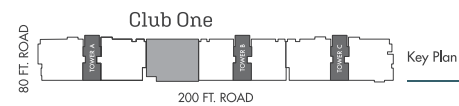
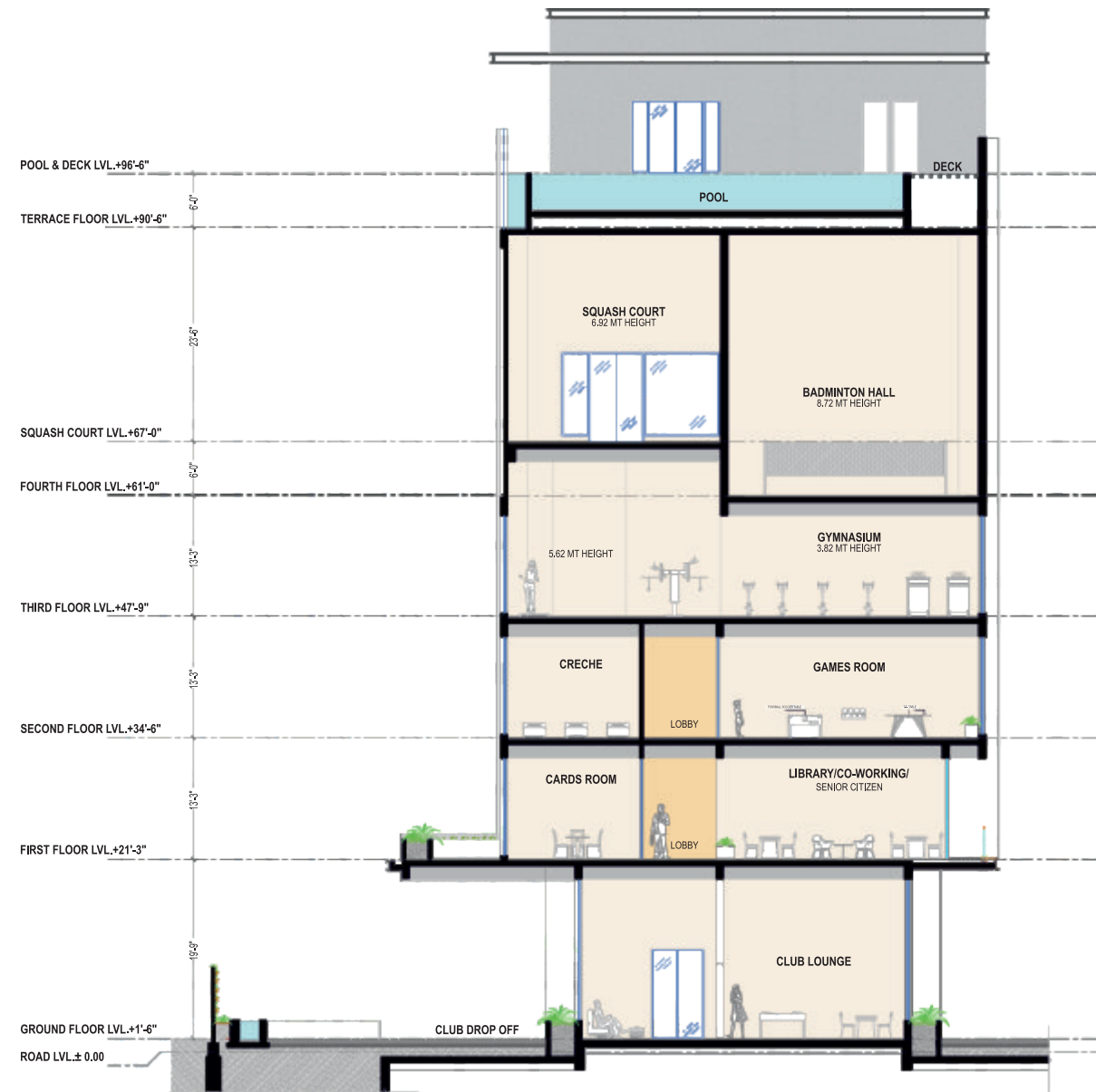




Clubhouse Plan

Club One

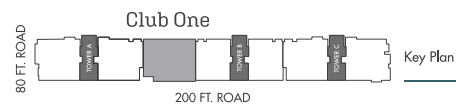
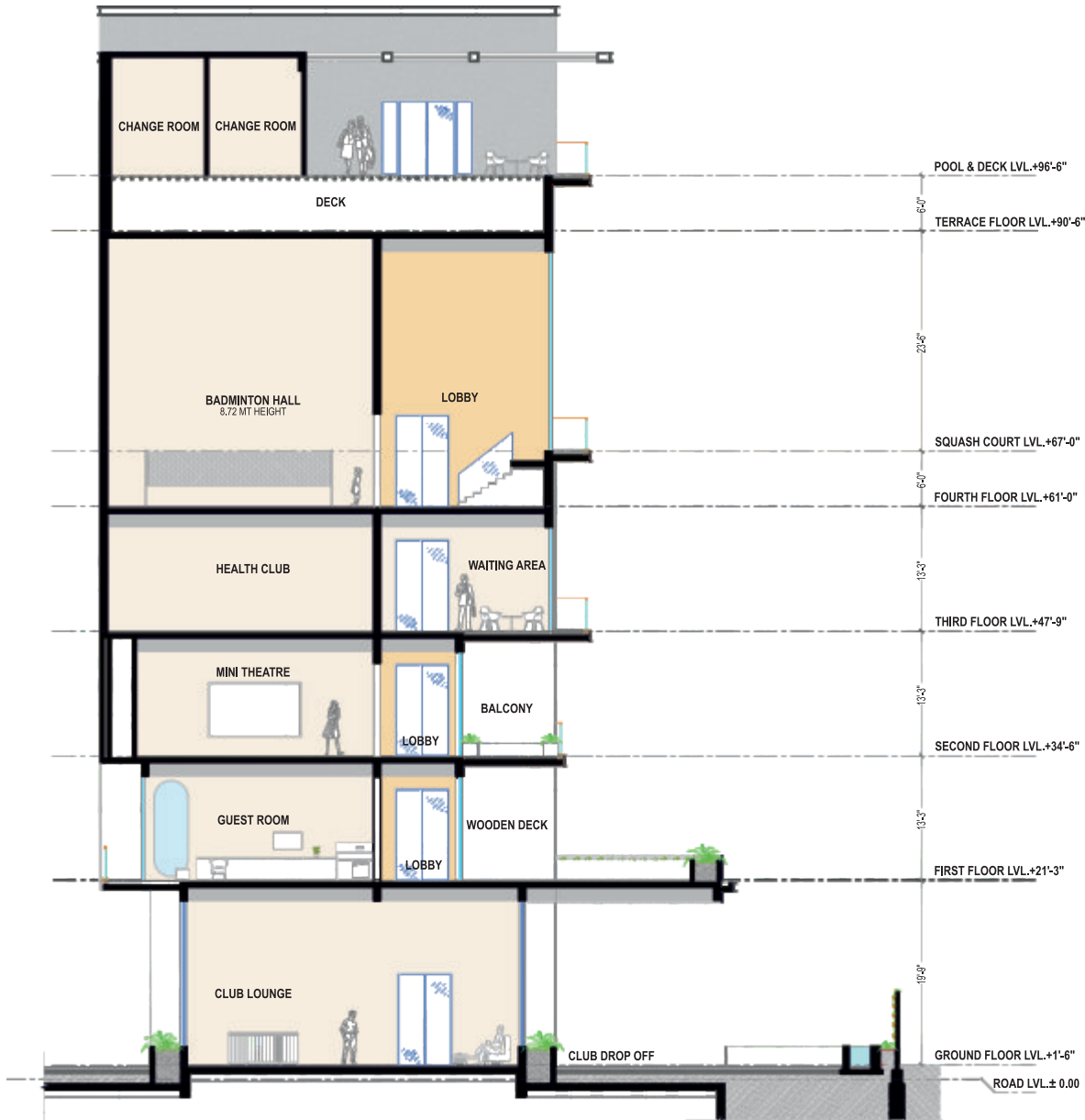
at The Sky Bungalows is the embodiment of luxurious socialising that represents an ingenious idea of an ultra-modern clubbing. It creates well-appointed spaces and serves the best experiences wrapped in the flavours of the upper echelon of society.



Club Section A



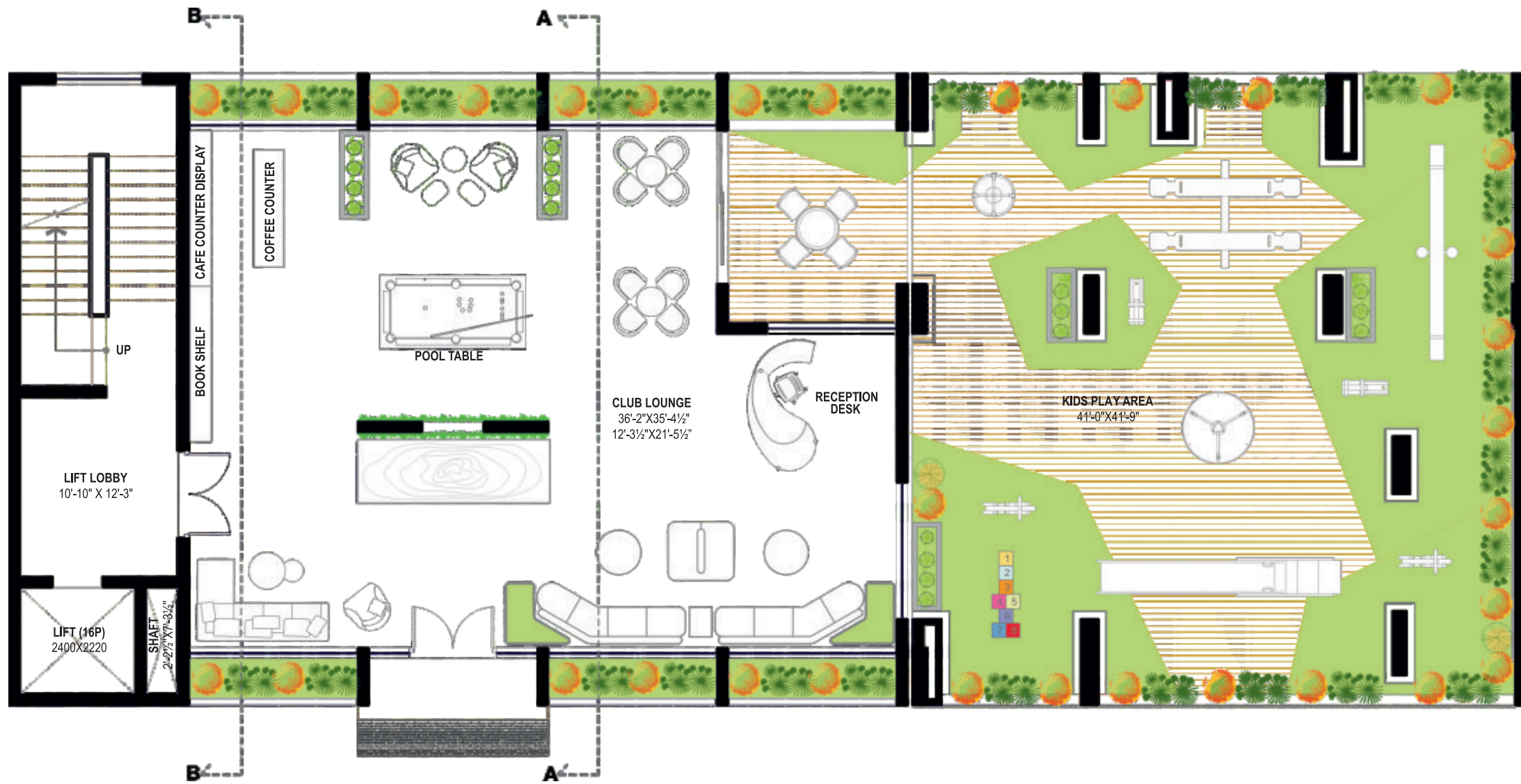
Club One



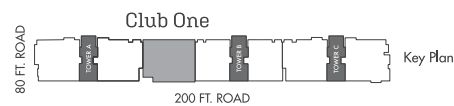
Club Section B



THE Sky BUNGALOWS
Live Outside The Lines



Club Plans

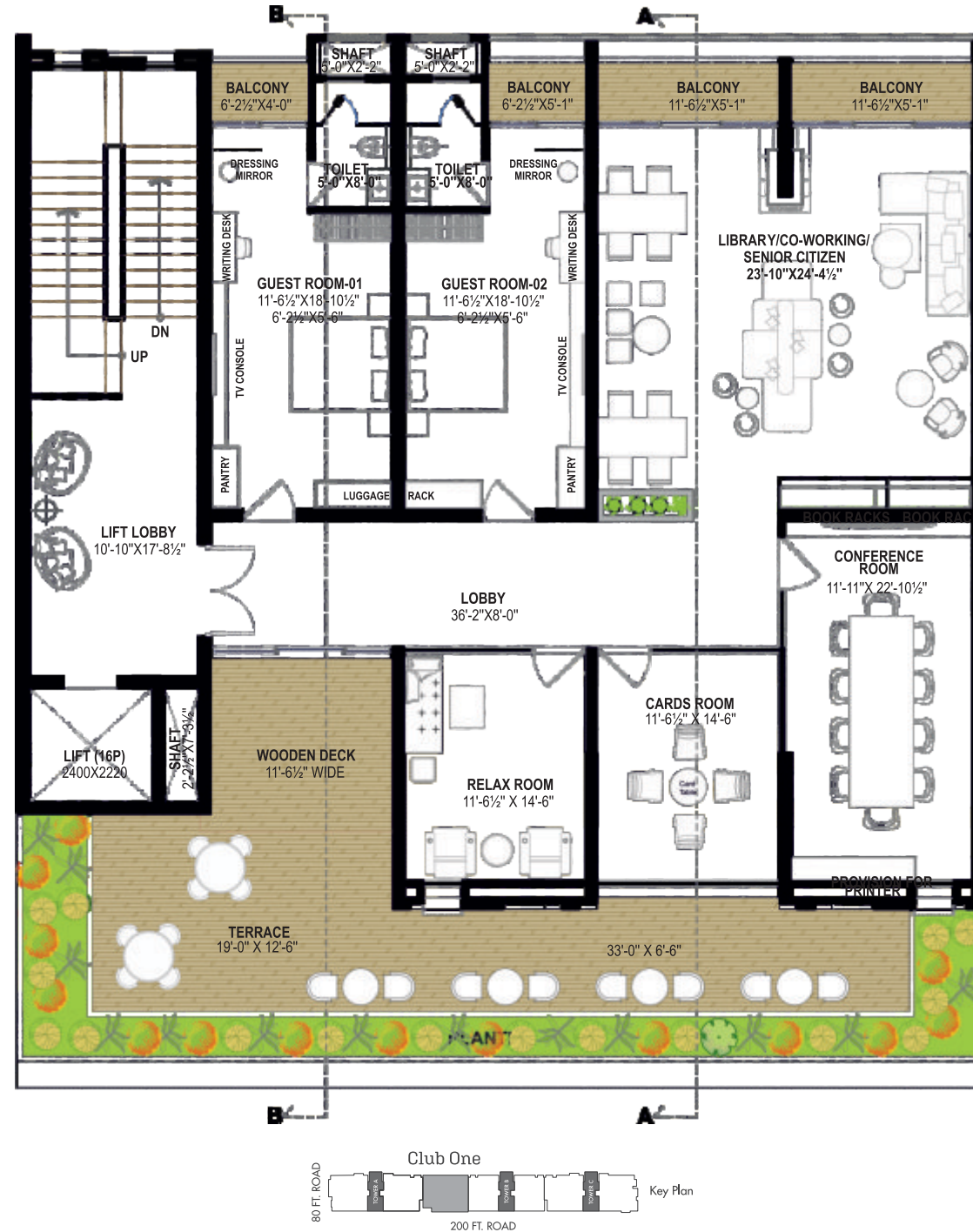


THE Sky BUNGALOWS
Live Outside The Lines

Ground Floor | Club Lounge Built Up Area 2327.58 Sq. Ft. | Kids Play Built Up Area 1784.65 Sq. Ft.



Club One



Club Plans

THE Sky BUNGALOWS
Live Outside The Lines

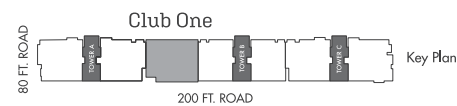
First Floor | Built Up Area 3091.39 Sq. Ft. | Balcony Area 966.70 Sq. Ft.



Club One



Club Plans

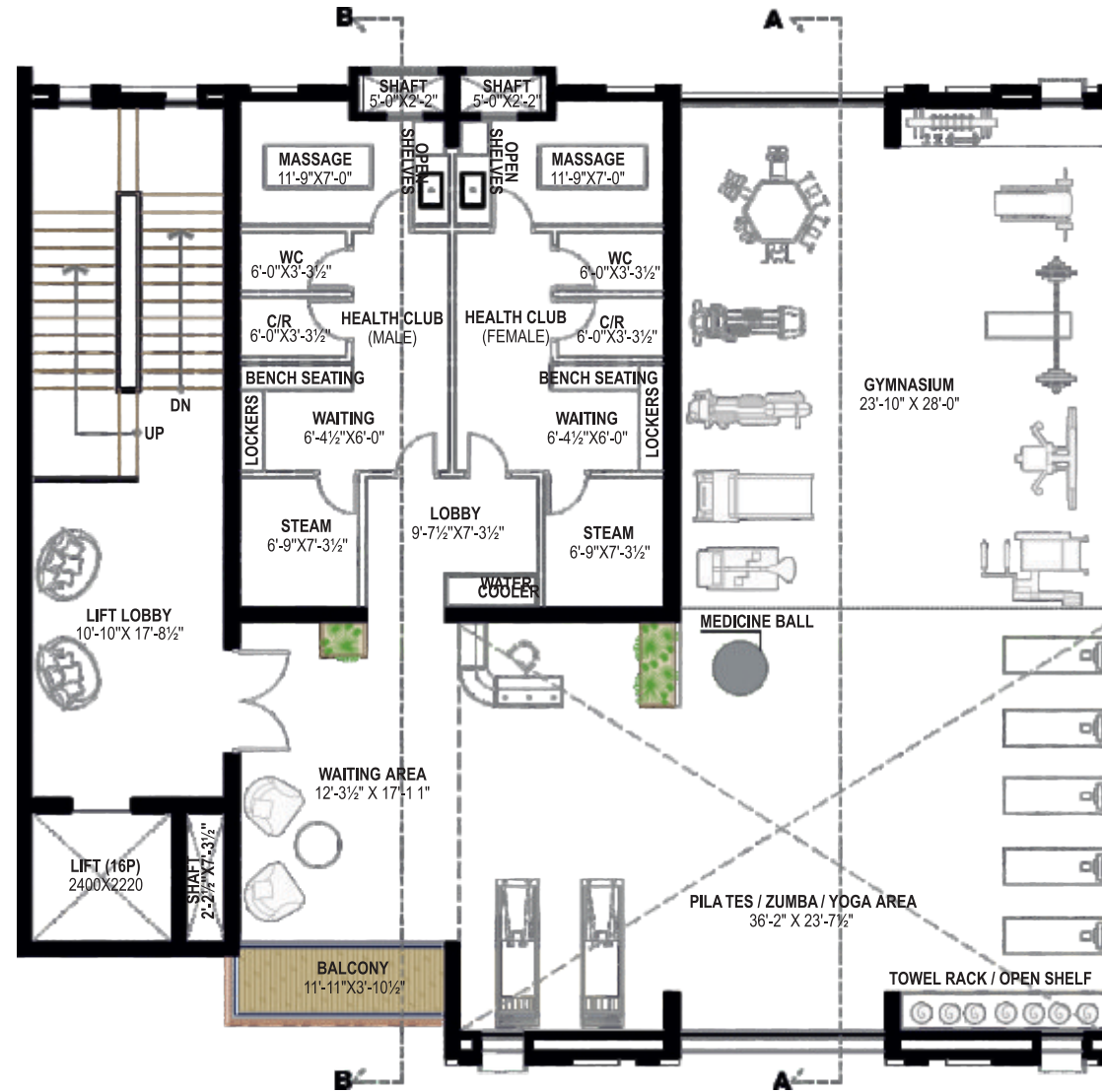


THE Sky BUNGALOWS
Live Outside The Lines

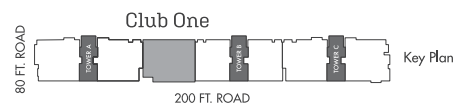
Second Floor | Built Up Area 3090.74 Sq. Ft.



Club One



Club Plans

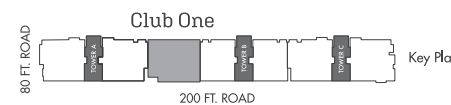
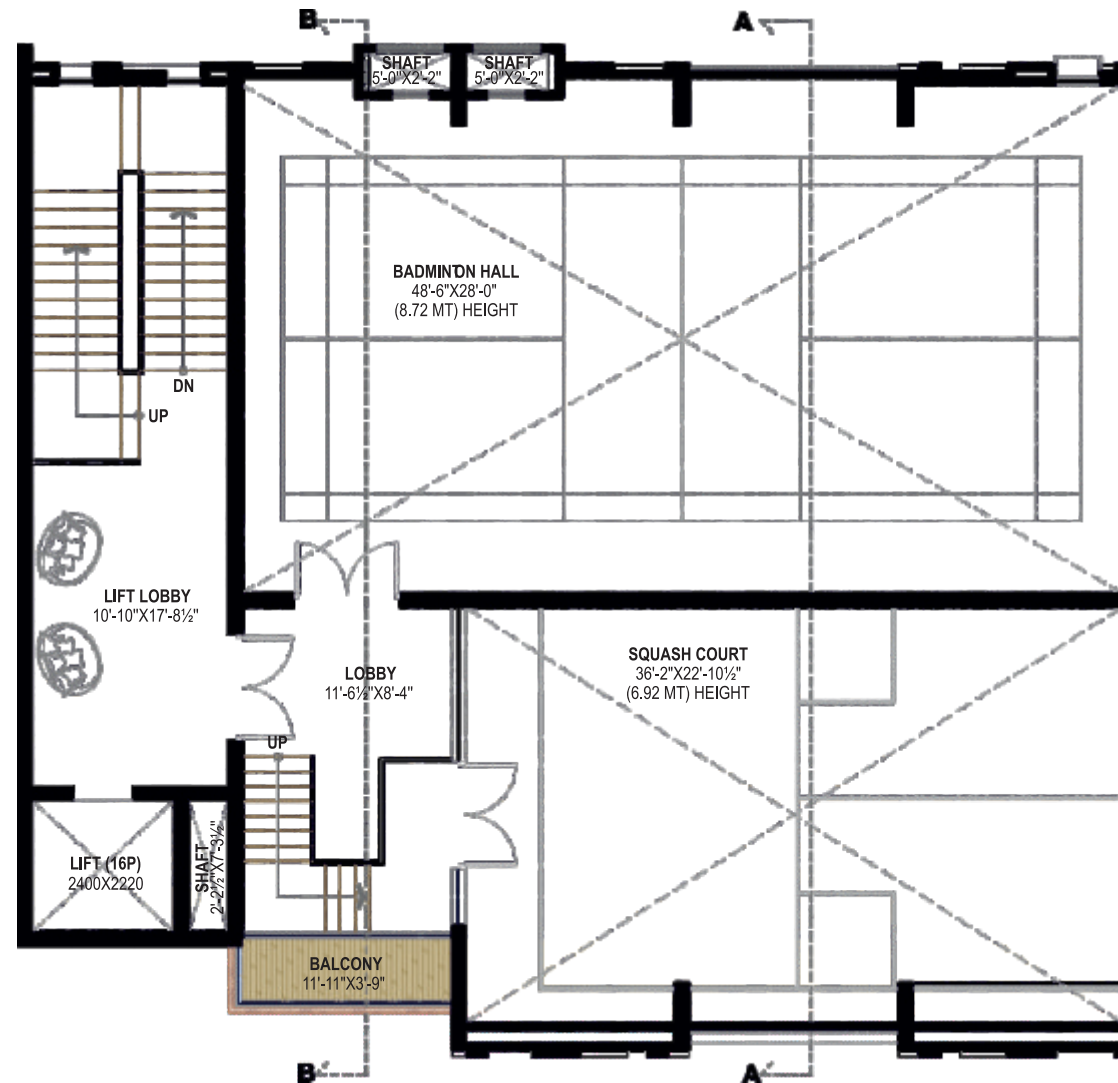


THE Sky BUNGALOWS
Live Outside The Lines

Third Floor | Built Up Area 3223.57 Sq. Ft.



Club One



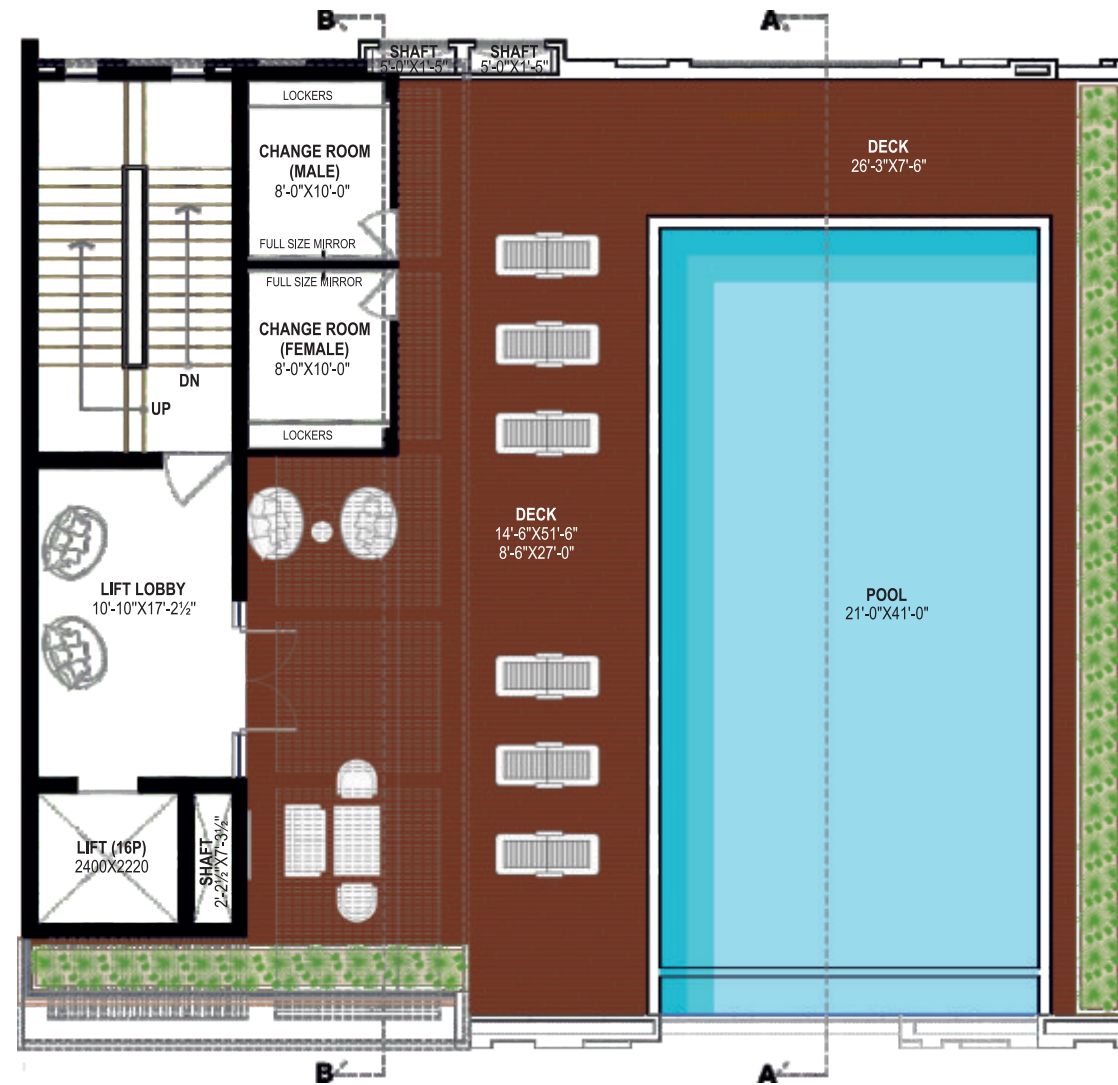
Club Plans

THE Sky BUNGALOWS
Live Outside The Lines

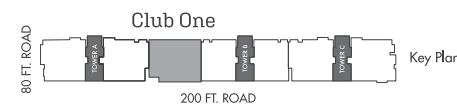
Fourth Floor | Built Up Area 3225.83 Sq. Ft.



Club One



Club Plans



THE Sky BUNGALOWS
Live Outside The Lines

Fifth Floor | Built Up Area 781.00 Sq. Ft. | Pool Area 996.84 Sq. Ft. | Deck Area 1487.86 Sq. Ft.

